

# MMA

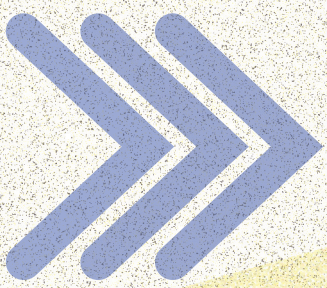
## (Methyl Methacrylate Adhesive)

### Advantages:

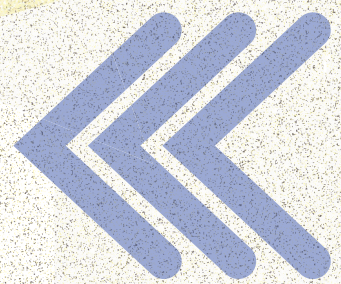
- ✓ Lightweight part joining
- ✓ Even stress distribution
- ✓ Strong, stable chemical bond
- ✓ Clean, smooth surface finish
- ✓ Sleek, modern aesthetic
- ✓ Superior long-term durability

### Disadvantages:

- ✗ May require surface preparation
- ✗ Curing time needed before handling
- ✗ Limited ability to disassemble parts



# VS



# Fasteners

### Advantages:

- ✓ Easy to inspect and disassemble
- ✓ Immediate connection—no curing required
- ✓ Familiar installation

### Disadvantages:

- ✗ Adds unnecessary weight
- ✗ Creates stress points at joints
- ✗ Can loosen over time
- ✗ Bulky hardware remains visible
- ✗ Surface protrusions—hard to hide or paint
- ✗ Susceptible to corrosion

